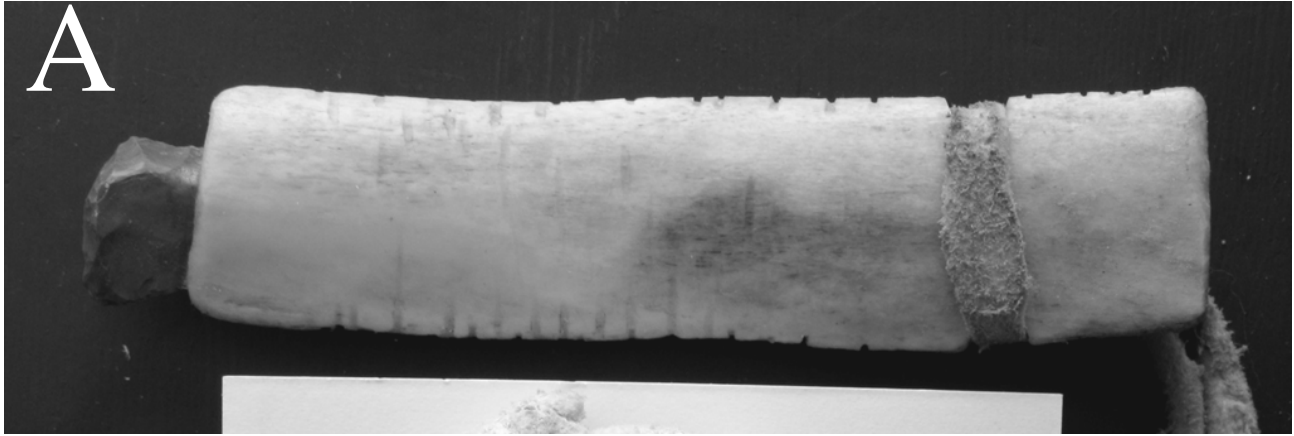
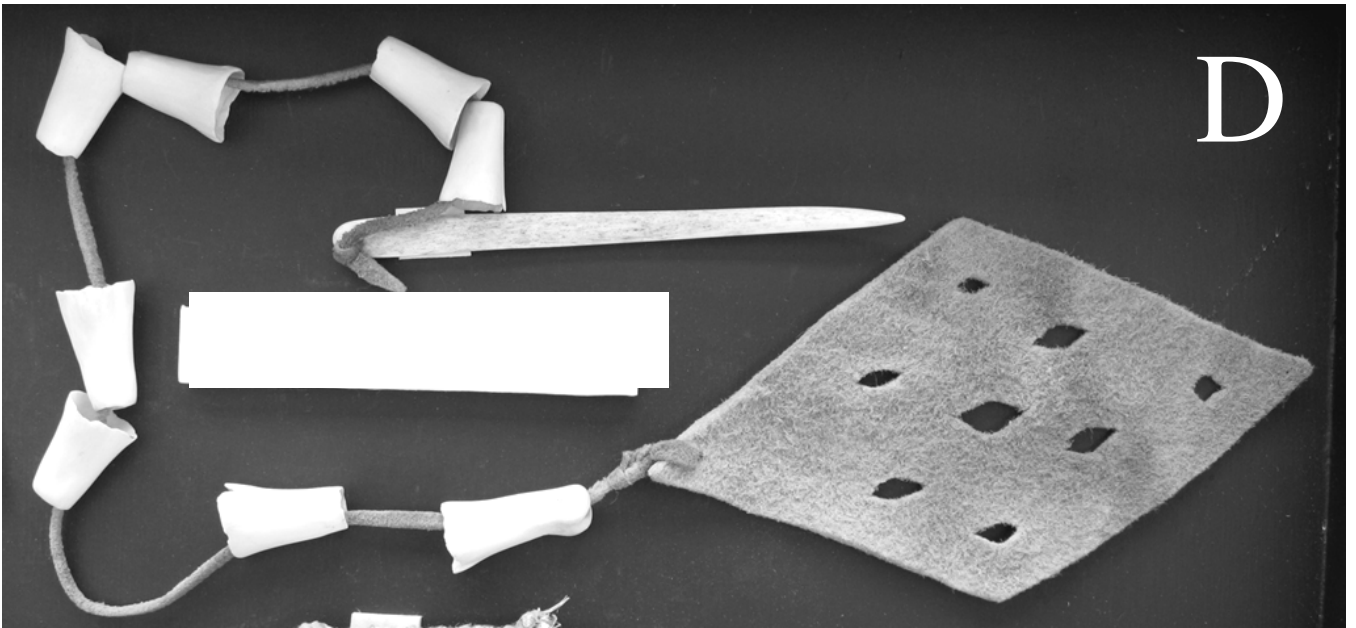


(Artefact Tools



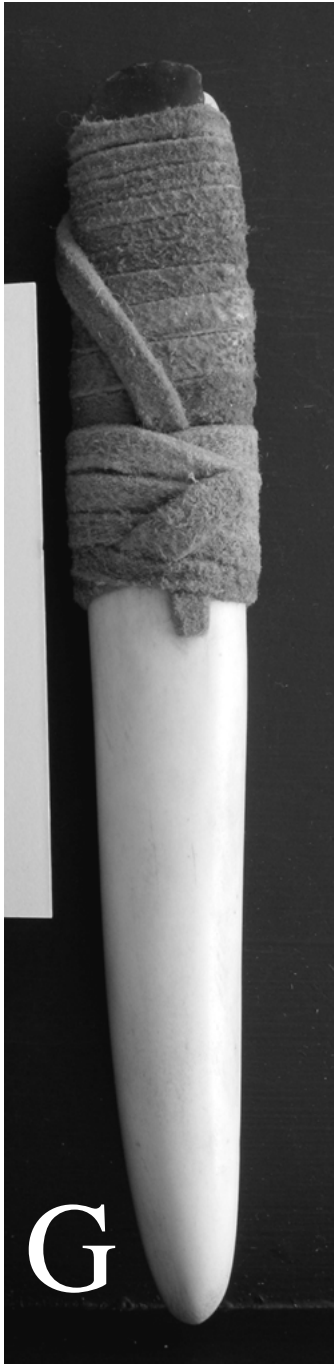


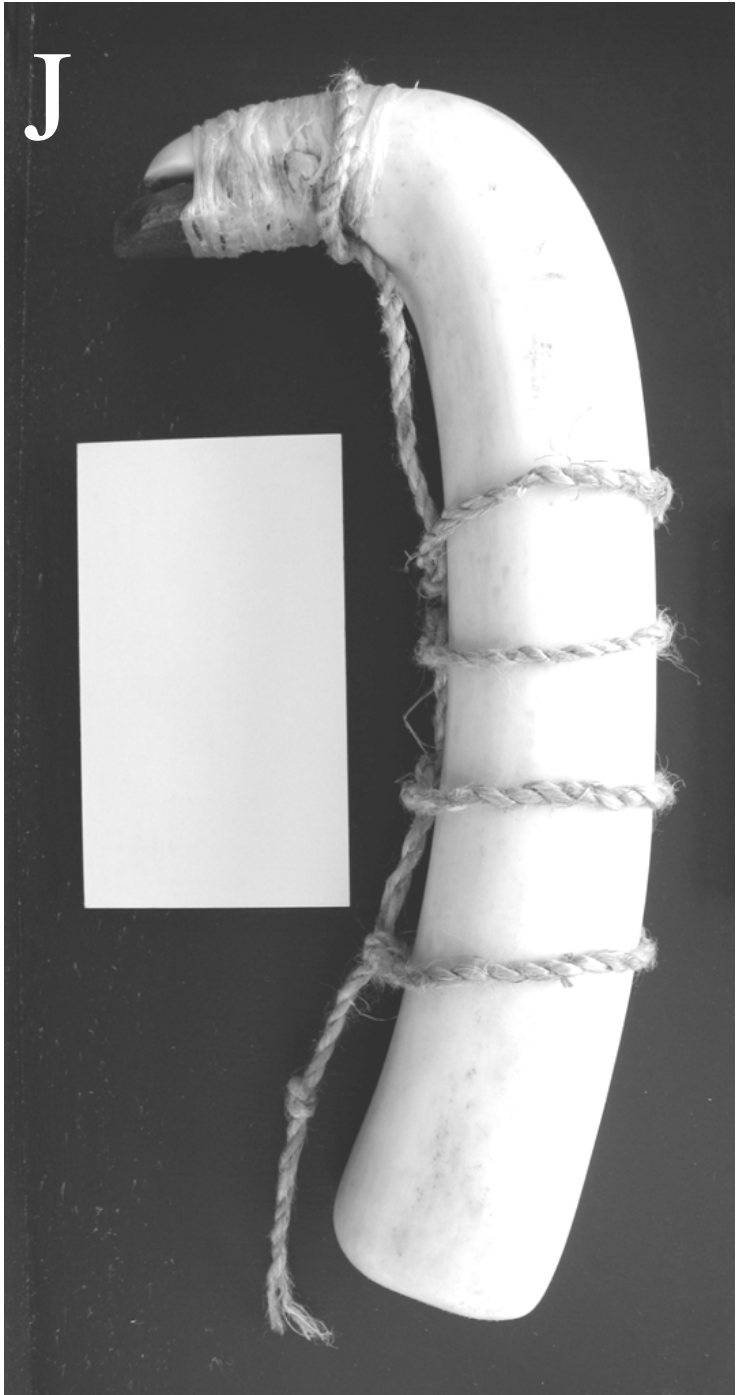
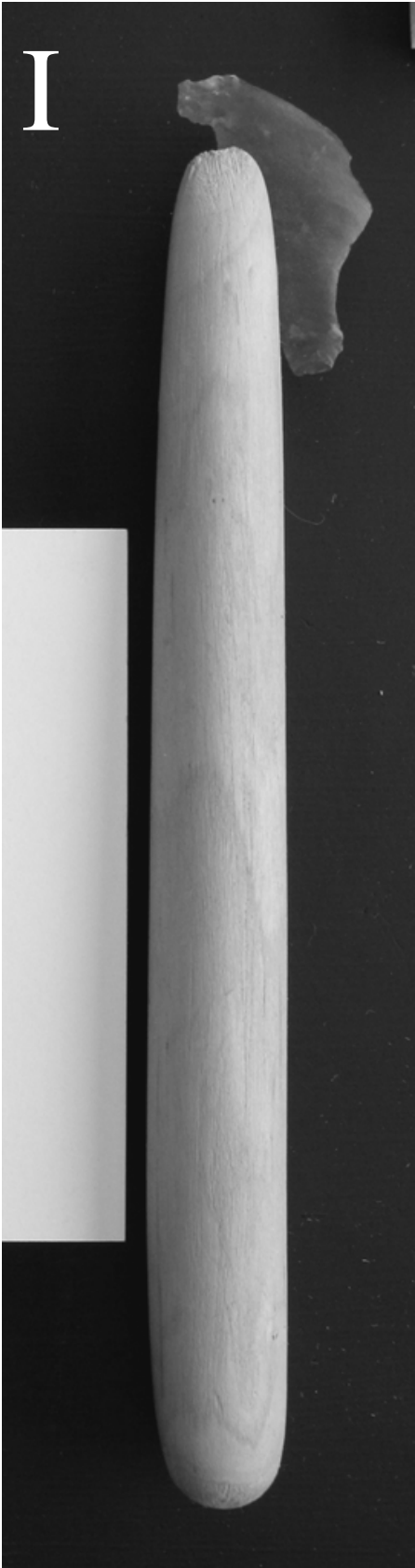
E



F









Answer Key

- A-** Hide scraper (made of flaked stone fit into animal rib bone with rawhide strap)
- B-** Spear foreshaft (made of flaked stone (projectile point) and wood tied with sinew)
- C-** Hammer stone with handle (made of grooved field stone and wooden handle connected by stretching rawhide over it all and stitching it together with sinew)
- D-** Ring and pin game (made of antler, hollowed bones, and rawhide)
- E-** Hoe blade (made of flaked and pecked stone)
- F-** Knife blade (made of obsidian stone)
- G-** Hide scraper made of flaked stone fit into antler connected with rawhide)
- H-** Fishing line and hook (made with antler, twine, and rawhide)
- I-** Utility knife with a finer blade (made with flaked stone set into wood using a natural glue)
- J-** Hide scraper (made of flaked stone fit into antler connected with sinew and wrapped with twine)
- K-** Drill (flaked stone set into wood and wrapped with rawhide)
- L-** Awl (antler wrapped with rawhide and twine)